

# LED T8 Tube

# MEGAMAN®

LT205090/mb-06v00, LT205125/mb-09v00, LT205160/mb-12v00, LT205220/mb-15v00, LT205065/mb-06v01, LT205105/mb-09v01, LT205160/mb-12v01, LT205240/mb-15v01, LT205090/mb-06v02, LT205140/mb-09v02, LT205180/mb-12v02, LT205220/mb-15v02, LT205090/mb/sp-06v03, LT205160/mb/sp-12v03, LT205220/mb/sp-15v03, LT205245/mb-18v03

## Instruction Manual

### TECHNICAL SPECIFICATION

Model Number	Wattage	Voltage	Frequency	Rated Current	Dimensions	Energy Class	Operating Temperature	Power Factor
LT205090/mb-06v00	9W	220-240V ~	50/60Hz	43mA	L603mm x D28mm	E	-30 C to +55 C	0.9
LT205125/mb-09v00	12.5W	220-240V ~	50/60Hz	60mA	L908mm x D28mm	E	-30 C to +55 C	0.9
LT205160/mb-12v00	16W	220-240V ~	50/60Hz	77mA	L1212mm x D28mm	E	-30 C to +55 C	0.9
LT205220/mb-15v00	22W	220-240V ~	50/60Hz	106mA	L1513mm x D28mm	E	-30 C to +55 C	0.9
LT205065/mb-06v01	6.5W	220-240V ~	50/60Hz	31mA	L603mm x D28mm	D	-30 C to +55 C	0.9
LT205105/mb-09v01	10.5W	220-240V ~	50/60Hz	91mA	L908mm x D28mm	D	-30 C to +55 C	0.9
LT205160/mb-12v01	16W	220-240V ~	50/60Hz	77mA	L1212mm x D28mm	D	-30 C to +55 C	0.9
LT205240/mb-15v01	24W	220-240V ~	50/60Hz	115mA	L1513mm x D28mm	D	-30 C to +55 C	0.9
LT205090/mb-06v02	9W	220-240V ~	50/60Hz	78mA	L603mm x D28mm	F	-30 C to +45 C	0.5
LT205140/mb-09v02	14W	220-240V ~	50/60Hz	121mA	L908mm x D28mm	F	-30 C to +45 C	0.5
LT205180/mb-12v02	18W	220-240V ~	50/60Hz	156mA	L1212mm x D28mm	F	-30 C to +45 C	0.5
LT205220/mb-15v02	22W	220-240V ~	50/60Hz	191mA	L1513mm x D28mm	F	-30 C to +45 C	0.5
LT205090/mb/sp-06v03	9W	220-240V ~	50/60Hz	78mA	L603mm x D28mm	E	-30 C to +55 C	0.5
LT205160/mb/sp-12v03	16W	220-240V ~	50/60Hz	139mA	L1212mm x D28mm	E	-30 C to +55 C	0.5
LT205220/mb/sp-15v03	22W	220-240V ~	50/60Hz	191mA	L1513mm x D28mm	E	-30 C to +55 C	0.5
LT205245/mb-18v03	24.5W	220-240V ~	50/60Hz	213mA	L1779mm x D28mm	E	-30 C to +55 C	0.5

### CAUTIONS

- Read the entire manual carefully before installation and operation.
- Only licensed and qualified electricians are allowed to perform the installation.
- Before the installation or replacement of the lamp, turn it off and allow it to cool down. Heat-resistant gloves are mandatory when handling the tube.
- The LED T8 Tube can be used to replace the traditional fluorescent T8 Tube with G13 lamp base and corresponding length mentioned in the above table.
- MEGAMAN® LED T8 Tube cannot work with electronic ballast.
- The LED starter should be used with the LED T8.
- Lamp is suitable for 50Hz or 60Hz operation.
- Dimming is not allowed.
- To replace the fluorescent T8 Tube, the existing starter has to be removed together with the tube. A MEGAMAN® starter is provided to work with MEGAMAN® LED T8 Tube.
- This lamp is designed for general lighting service (excluding explosive atmospheres).
- The minimum safety distance from the illuminated object is 0.1m.
- Any constructive change of the luminaire in case of applying retrofit LED lamp shall not be permitted.
- The lamp should be used in dry conditions or in a luminaire that provides protection.
- The lamp is not suitable to be used in emergency luminaires designed for double-capped fluorescent lamp(s).
- This lamp may not be suitable for use in all applications where a traditional fluorescent lamp has been used. The temperature range of this lamp is more restricted. In cases of doubt regarding the suitability of the application the manufacturer of this lamp should be consulted.
- The manufacturer accepts no liability for any damages resulting from the misuse of the lamp or when it is used with inappropriate equipment.
- Consult your dealer for any enquiries.
- No modifications of the luminaire which the LED lamp is to be used with are to be made.



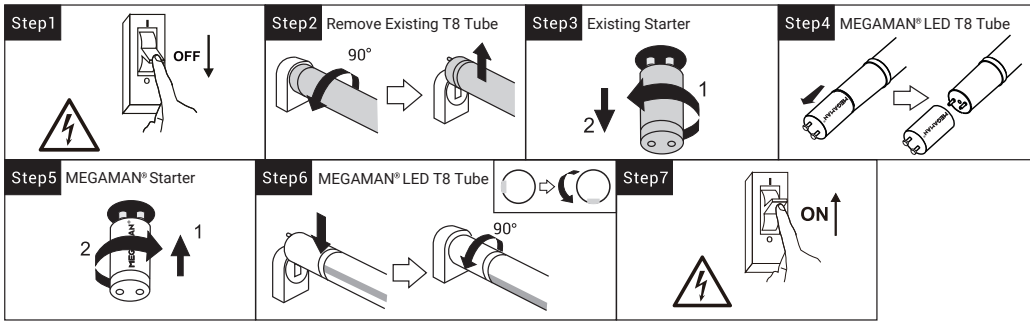
### ATTENTIONS

- Instant start is allowed.
- The LED T8 Tube is designed for general lighting service (excluding for example explosive atmosphere).
- The overall energy efficiency and light distribution are determined by the installation design.

### PART LIST

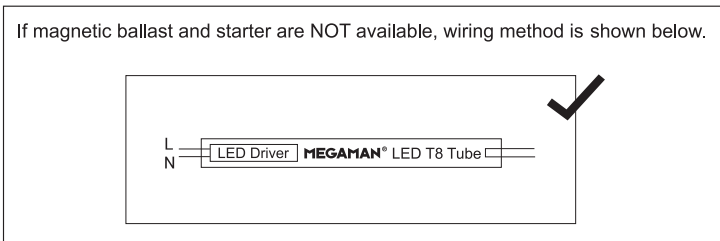
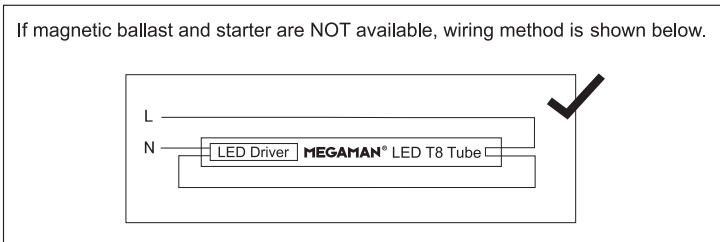
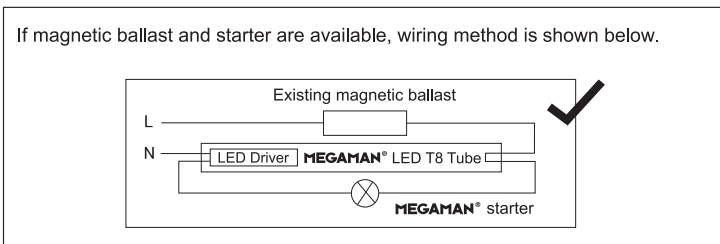
LED T8 Tube	x1
MEGAMAN® Starter LA121126	x1

# Installation




## WIRING DIAGRAM

### SINGLE ENDED INPUT



## Correct Disposal of This Product

 This marking indicates that this product should not be disposed with other household wastes throughout the EU. To prevent possible harm to the environment or human health from uncontrolled waste disposal, recycle it responsibly to promote the sustainable reuse of material resources. To return your used device, please use the return and collection systems or contact the retailer where the product was purchased. They can take this product for environmental safe recycling.

